

BSE – Biomedical Engineering (BIME) Concentration

FRESHMAN

SOPHOMORE

JUNIOR

SENIOR

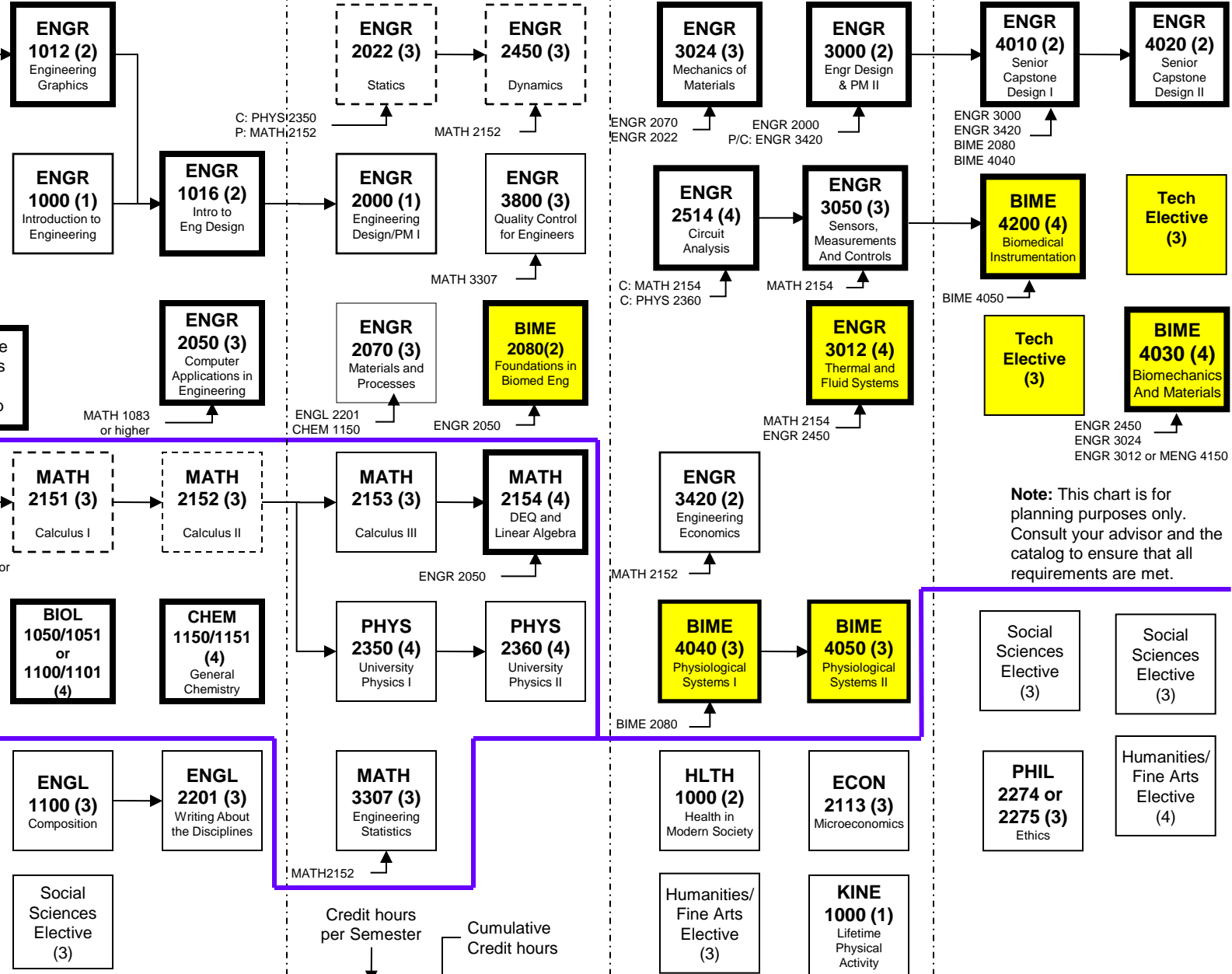
Engineering
39 core hours +
26 concentration hours

Math/Science
32 hours

General
31 hours

Dotted line denotes minimum Grade = C

Bold line denotes class with lab



Note: This chart is for planning purposes only. Consult your advisor and the catalog to ensure that all requirements are met.

Revision Date: 06102015