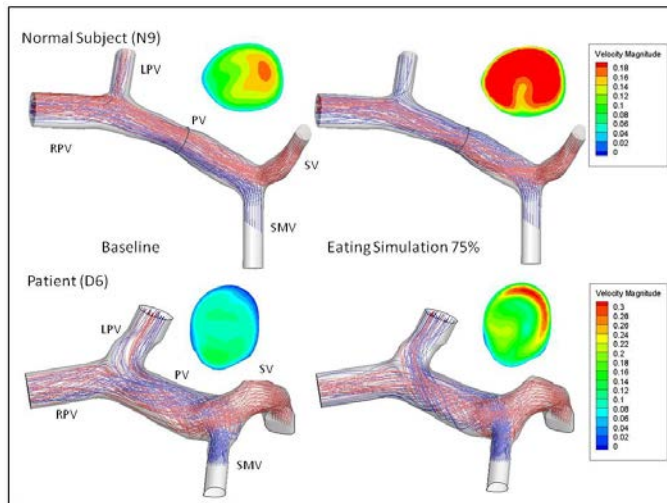


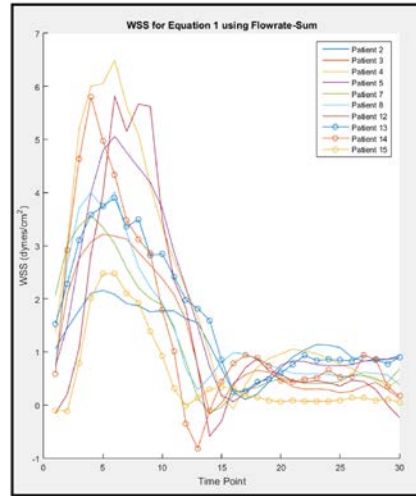


Dr. Stephanie M. George  
 Assistant Professor, Engineering and Biomedical Engineering  
 Concentration Coordinator.  
 Hemodynamics, Cardiovascular Mechanics, Computational Fluid  
 Dynamics, Medical Image Processing, Modeling.

### Portal Vein Hemodynamics



### MR-based Wall Shear Stress in PH



### Research Interests

- Computational Fluid Dynamics (CFD) of the pulmonary artery in pulmonary hypertension (PH)
- Hemodynamics of coronary bypass grafts
- Improved diagnosis and monitoring of pulmonary hypertension using ECHO and MRI
- Hemodynamics of sickle cell disease
- Portal Vein Hemodynamics

### Engineering Education

- Research Experiences for Undergraduates
- Innovation and design in Biomedical Engineering
- Problem Based Learning
- Integration of research into course design

### Retrospective ECHO Analysis

