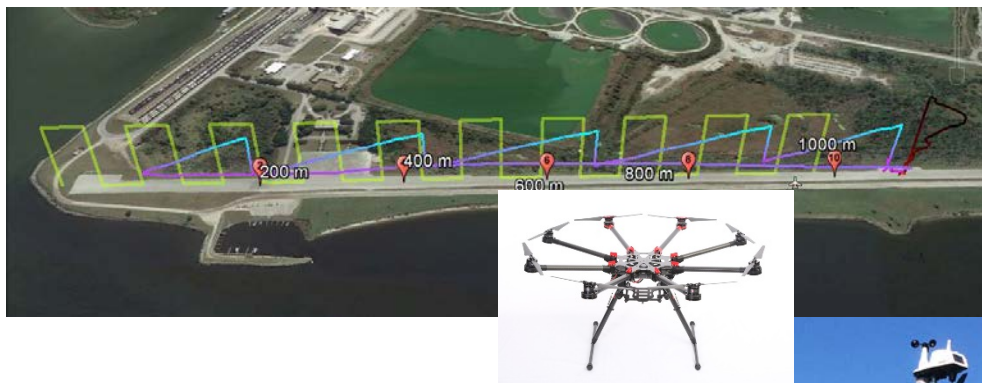


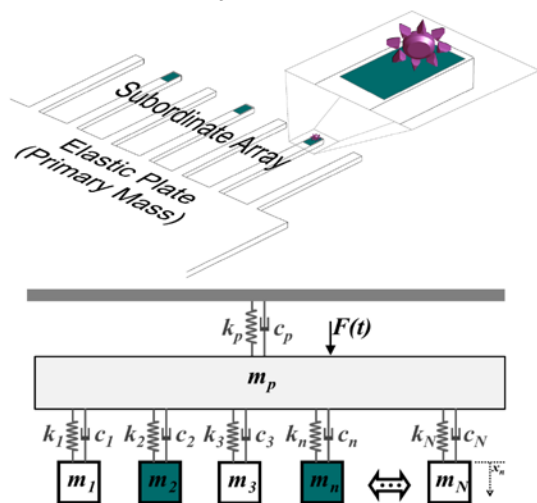


Dr. Teresa J. Ryan
 Assistant Professor, Mechanical Engineering
 Acoustics and Vibrations, Complex System Dynamics, Metamaterials, Applications of Coupled Resonant Systems: Mass Detection and Adaptive Signatures, Ethics in Engineering Education, Technical Communication

The Effect of Atmospheric Properties on Long Distance Acoustic Propagation



Coupled Resonant Systems as Mass Sensors



Laser Doppler Vibrometry

- Custom Scanning Laser Doppler Vibrometer

UAV Mapping of Atmospheric Properties

- Volumetric profiles of temperature, humidity, and atmospheric pressure

Distributed Acoustic Array

- High spatial resolution GPS synchronized acoustic mapping

Engineering Education

- Ethics and Academic Integrity
- Technical Communication Skill Development

