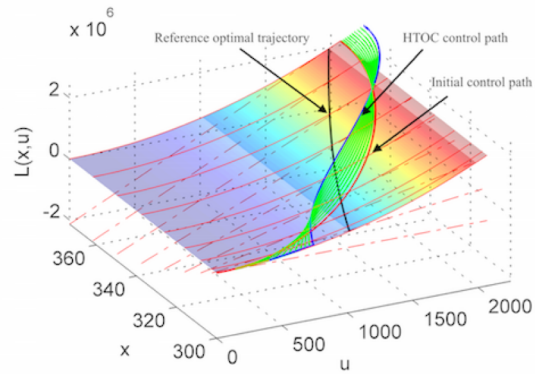




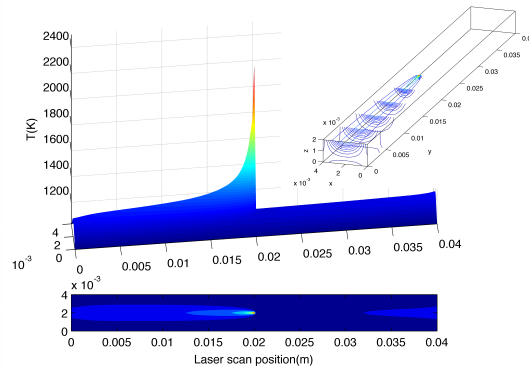
Dr. Jinkun Lee

*Assistant Professor of Industrial and Systems Engineering
Operations Research, Data-driven Dynamic Optimization, Drone
Flight Path Optimization, Insulin Pump Optimal Control, Sustainable
Renewable Resource Management.*

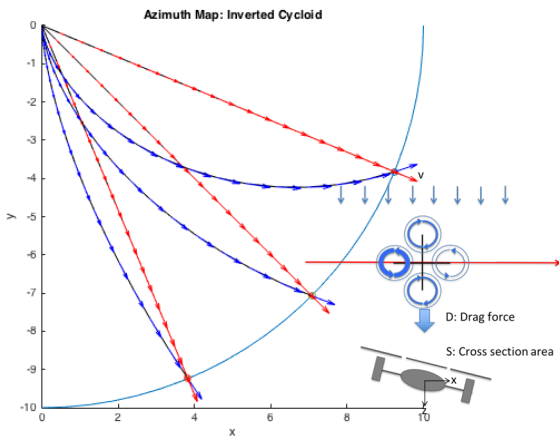
Data Driven Algorithm Development



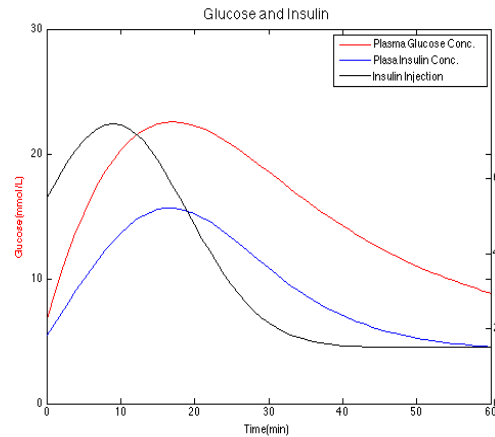
Additive Manufacturing Control



Drone Flight Path Optimization



Model Based Insulin Pump



Operations Research

- **Data Driven Dynamic Optimization Algorithm**
- **Metal Powder Laser Based Additive Manufacturing**
- **Drone Flight Path Optimization**
- **Model based Insulin Pump Optimal Control**
- **Sustainable Dynamic Renewable Resource Management**

Dynamic Resource Management

